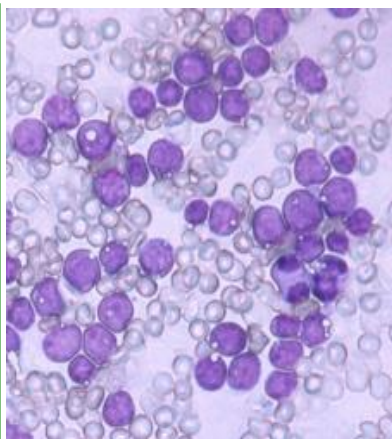


# PROMETHEUS



## PROMETHEUS

Software for Stem Cells Donor Registries



Introduction to EMDIS

Mechelen, Belgium  
February 2013



Steiner Ltd.  
[www.steiner.cz](http://www.steiner.cz)  
[www.steinersw.eu](http://www.steinersw.eu)  
[www.hlasoft.com](http://www.hlasoft.com)  
[david@steiner.cz](mailto:david@steiner.cz)  
Prague  
Czech Republic

# PROMETHEUS

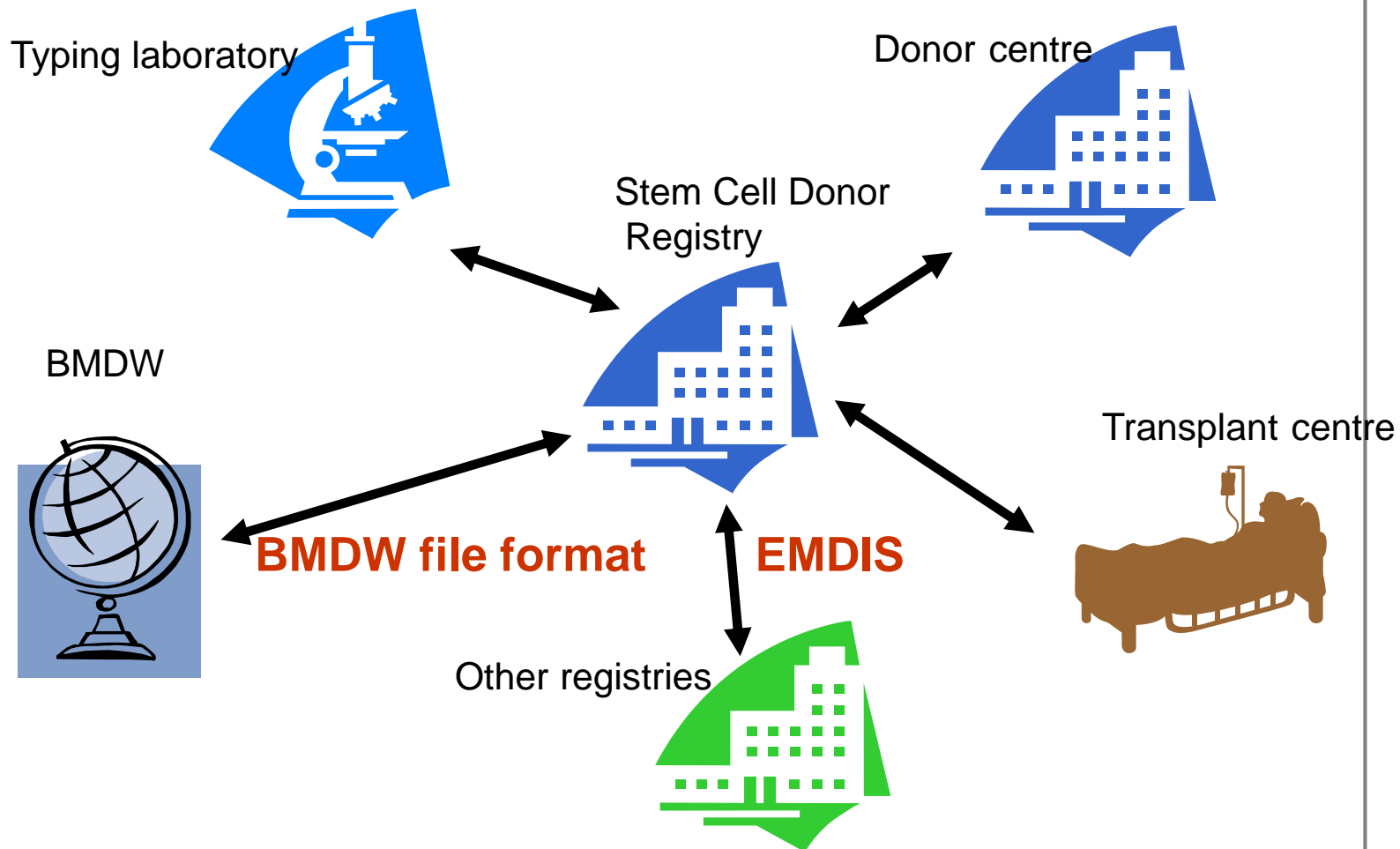
## Contents

- **Introduction to EMDIS**
- **Technical concepts**
- **ESTER**



# PROMETHEUS

## Communication overview



QMS

ISO 9001:08

ISMS

ISO 27001:05

tayllorcox.com tayllorcox.com

Steiner Ltd.

[www.steiner.cz](http://www.steiner.cz)[www.steinersw.eu](http://www.steinersw.eu)[www.hlasoft.com](http://www.hlasoft.com)

david@steiner.cz

Prague

Czech Republic

# PROMETHEUS

## EMDIS members

### Already connected to:

- AT – Austria
- AU – Australia
- CH – Switzerland
- CZ – Czech Stem Cells

### Registry

- DE – ZKRD
- ES – Spain
- FR – FGM
- GB – Anthony Nolan
- GL – Gift of Life
- IT – Italy
- NL – Netherland
- NO – Norway
- SE – Sweden
- US – NMDP
- WA – Wales

### Future Connections:

- BR – Brazil
- CA – Canada
- CR – Caitlin Raymond
- CY – Cyprus
- DK – Denmark, Aarhus
- EN – BBMR
- FI – Finland
- HU – Hungary
- IL – Israel, Ezer Mizion
- RO – Romania
- SI – Slovenia
- SK – Slovakia
- TW – Taiwan
- WB – Poland, PL3 ALF
- ZA – South Africa



# PROMETHEUS

## EMDIS messages

Message	Description
PAT_UPD	New patient registration
PAT_STAT	Patient status change
PAT_ALTPH	Patient alternative phenotype registration (not used)
DONOR_CB blood)	List item of convenient donors for patient (one donor or cord blood)
PHEN_LIST phenotype)	List item of convenient phenotypes for patient (one phenotype)
MATCH_SUM	Summary of search results for patient
TYP_REQ	Request of further donor type testing
TYP_RES	Result of further donor type testing
SMP_REQ	Request of sending of donor blood sample
SMP_ARR	Supposed date of delivery of donor blood sample
SMP_RES	Sample test result
IDM_REQ	Request of sending of infectious illness sample



# PROMETHEUS

## EMDIS messages

Message	Description
IDM_RES	IDM testing result
RSV_REQ	Request of donor reservation for transplantation purpose
RSV_RES	Result of reservation
REQ_CAN	Request cancel
WOR_REQ	Request of starting work on transplantation
MARR_STAT	State of “work” with donor
NEW_ADD	Register data update
MSG_DEN	Request rejection
WARNING	Warning message
TXT_MSG	Text message
DON_UPD	Donor downloading (not used)
SEA_RES	Search result (not used)
NO_RES	No result, Service cannot be settled
MSG_ACK	Received messaged confirmation



# PROMETHEUS

## EMDIS messages

Message	Description
RES_REM	Unsettled request remind
ALM_REQ	Donor alternative phenotype reservation
ALM_RES	Same as DONOR_CB, but is used as an answer to ALM_REQ
CBR_REQ	Request of supplemental information about Cord blood unit

